



Years Warranty*

ANSMANN Comfort Multi

Quick charger with USB input for 1-4 NiMH rechargeable batteries, sizes AAA / AA / C / D as well as a 9V PP3

Features

- Quick charger with USB input for 1-4 NiMH rechargeable batteries, sizes AAA / AA / C / D as well as a 9V PP3
- incl. USB cable
- Microcontroller-based charging with individual slot monitoring
- Charging starts automatically with automatically adapted charge current once the batteries have been inserted with the correct polarity
- Status display by means of 3-colour LED for each charge slot
- For round cells: Intelligent "PERFECT 7 Charging" function: Rapid capacity test / gentle pre-charging / rechargeable battery analysis / quick-charging / IQ shutdown / top-off charging / maintenance charging
- For 9V PP3: Rapid capacity test / fault detection / time-controlled charging



Powered by USB



Fast Charge Mode



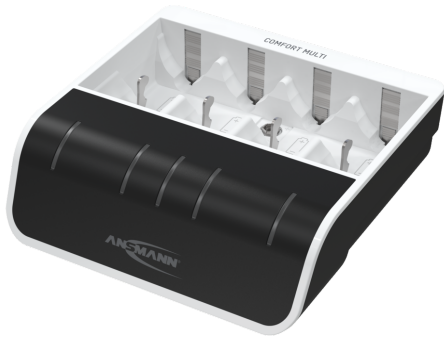
Single Shaft Monitoring



Various Protections



Capacity Quick Test



Article number: 1001-0093
Product content: Comfort Multi, 100cm USB-Kabel, Bedienungsanleitung
Customs tariff number: 85044055900
Packing Unit: 20 (368 × 354 × 295 mm)
Price: 31,99 €



Specifications

Input voltage	5V DC
Weltweit einsetzbar	Yes
Ladbare Zellchemie	Nickel metal hydride
Ladbare Zellen	AAA / HR03 / AA / HR6 / C / HR14 / D / HR20 / 9V block / 6F22
Ladestrom AAA	400mA (1-4)
Ladestrom AA	800mA (1-4)
Ladestrom C	800mA (1-4)
Ladestrom D	800mA (1-4)
Ladestrom E	15mA (1)
Mikroprozessorsteuerung	Yes
Temperaturüberwachung	No
Sicherheitstimer	Yes
Einzelshachtüberwachung	Yes
Überladeschutz	Yes
Akku-Defekterkennung	Yes
Kapazitäts-Schnelltest	Yes
Color	white / black
Packaging	cardboard box